

COUNTY OF PALM BEACH  
STATE OF FLORIDA  
This Plat was filed for record at ...  
this ... day of ...  
19 ... and duly recorded in Plat Book No. ...  
on page ...  
JOHN B. DUNKLE, Clerk, Circuit Court.  
By ... D.C.

# ADDISON PLACE

A PLANNED UNIT DEVELOPMENT - P.U.D.

BEING A REPLAT OF PORTIONS OF TRACTS 88, 89, 90, 91, 110, 111, 112 AND 113, BLOCK 79, PALM BEACH FARMS COMPANY'S PLAT NO. 3, AS RECORDED IN PLAT BOOK 2, PGS. 45 - 54, SITUATE IN SECTION 20,

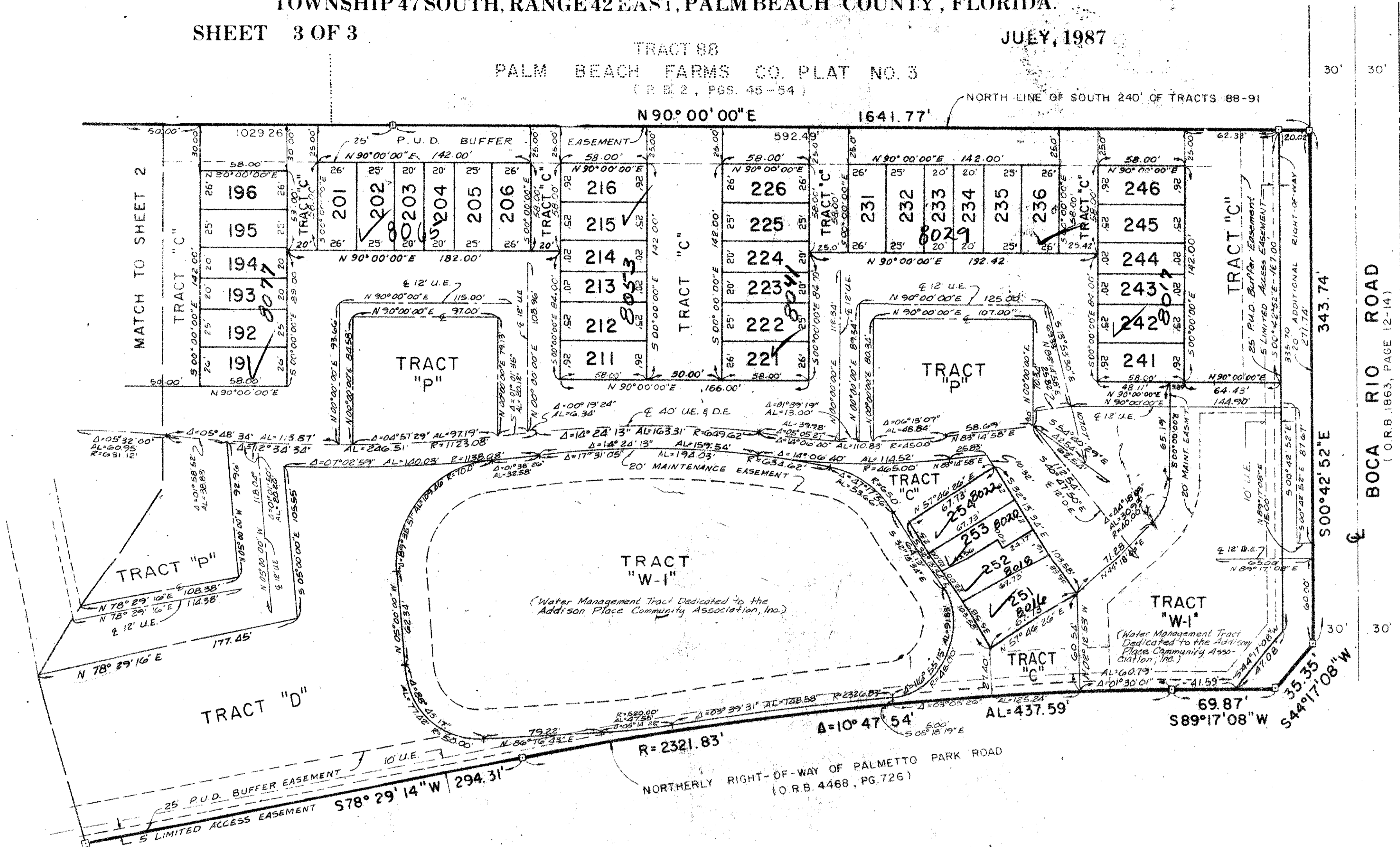
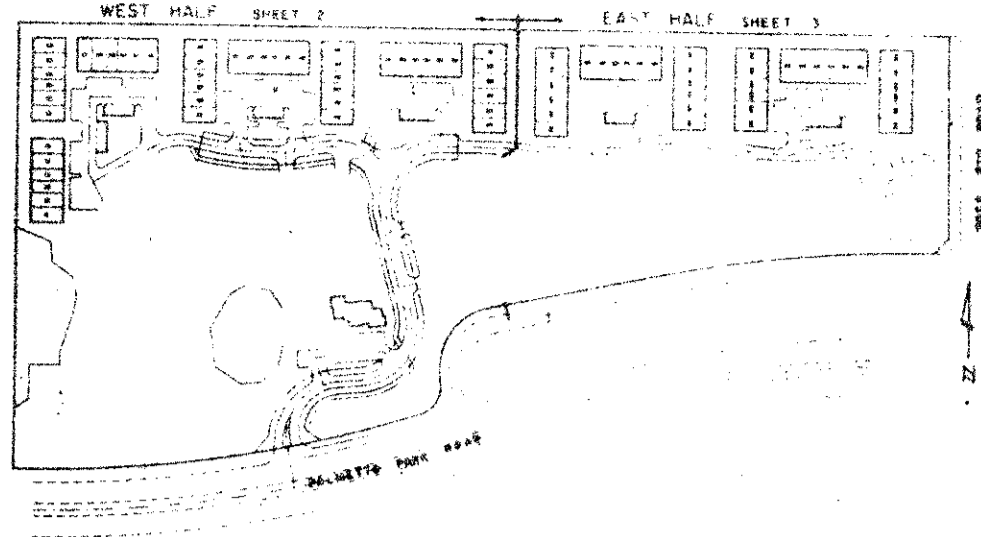
TOWNSHIP 47 SOUTH, RANGE 42 EAST, PALM BEACH COUNTY, FLORIDA.

SHEET 3 OF 3

TRACT 88

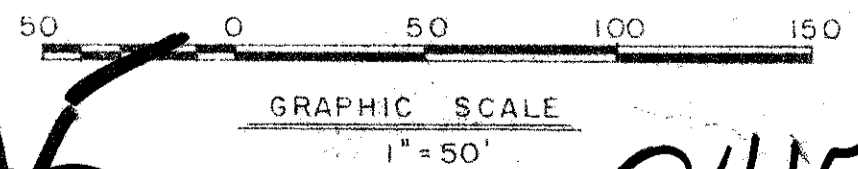
JULY, 1987

PALM BEACH FARMS CO. PLAT NO. 3  
(P.B. 2, PGS. 45-54)



2306  
RS  
33433  
TAX 786  
7/1/87

APP. BY  
CHECKED BY



59/45

0415-001

NOTE:  
ALL TIES FROM THE BOUNDARY LINES TO LOT CORNERS AS SHOWN  
HEREON ARE RADIAL OR AT RIGHT ANGLES TO SAID BOUNDARY.

Field Book No. Pg.	ROBERT E. OWEN & ASSOCIATES, INC.	Job No. 87-1040
Design D. POTIRIS	ENGINEERS - PLANNERS - SURVEYORS	Scale 1" = 50'
Drawn J. SHEPHERD	WEST PALM BEACH FLORIDA	Date JULY 1987
Checked		Sheet 3 of 3
		File BF-2417

ADDISON PLACE

PALM BEACH COUNTY, FLORIDA